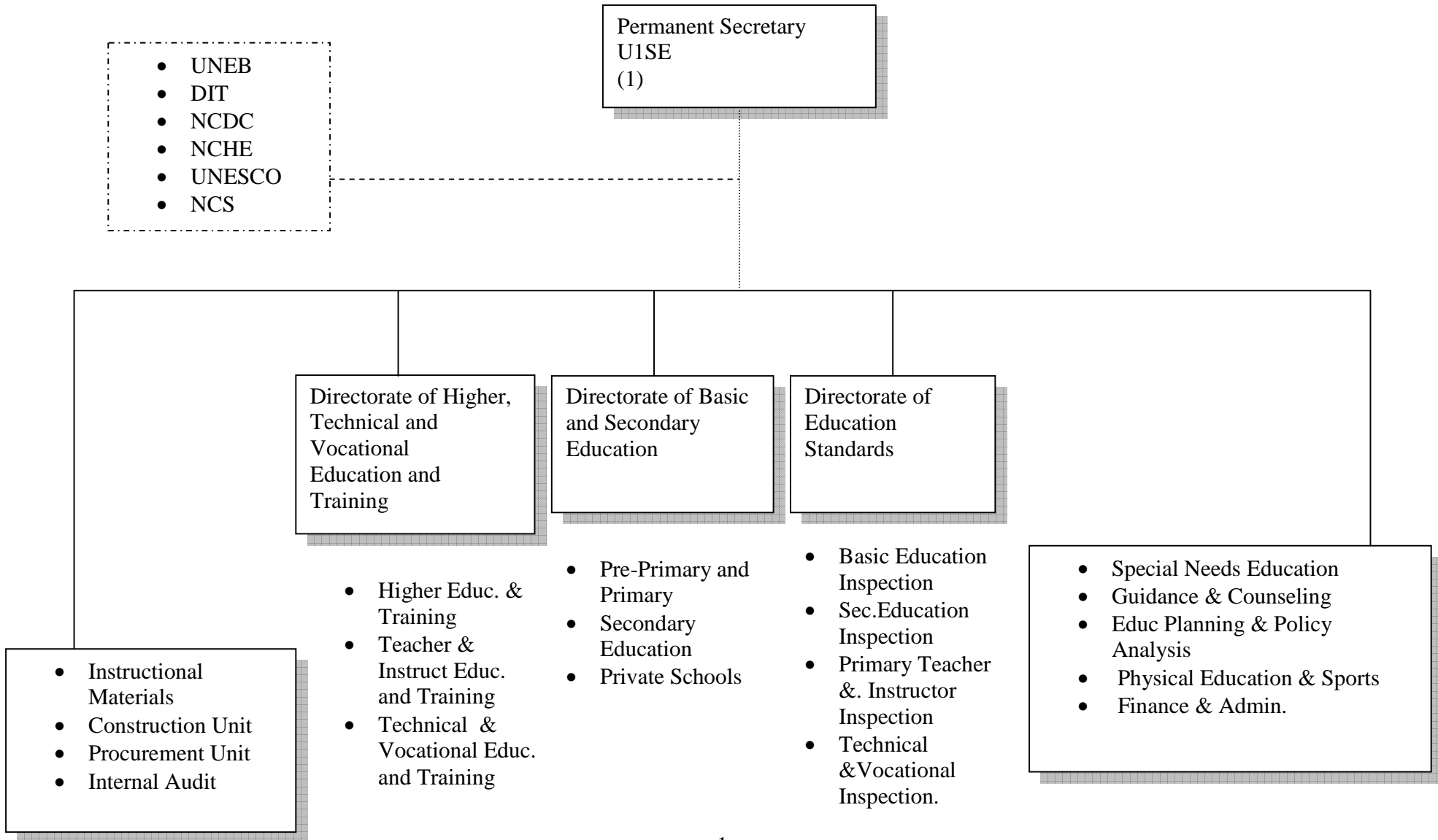
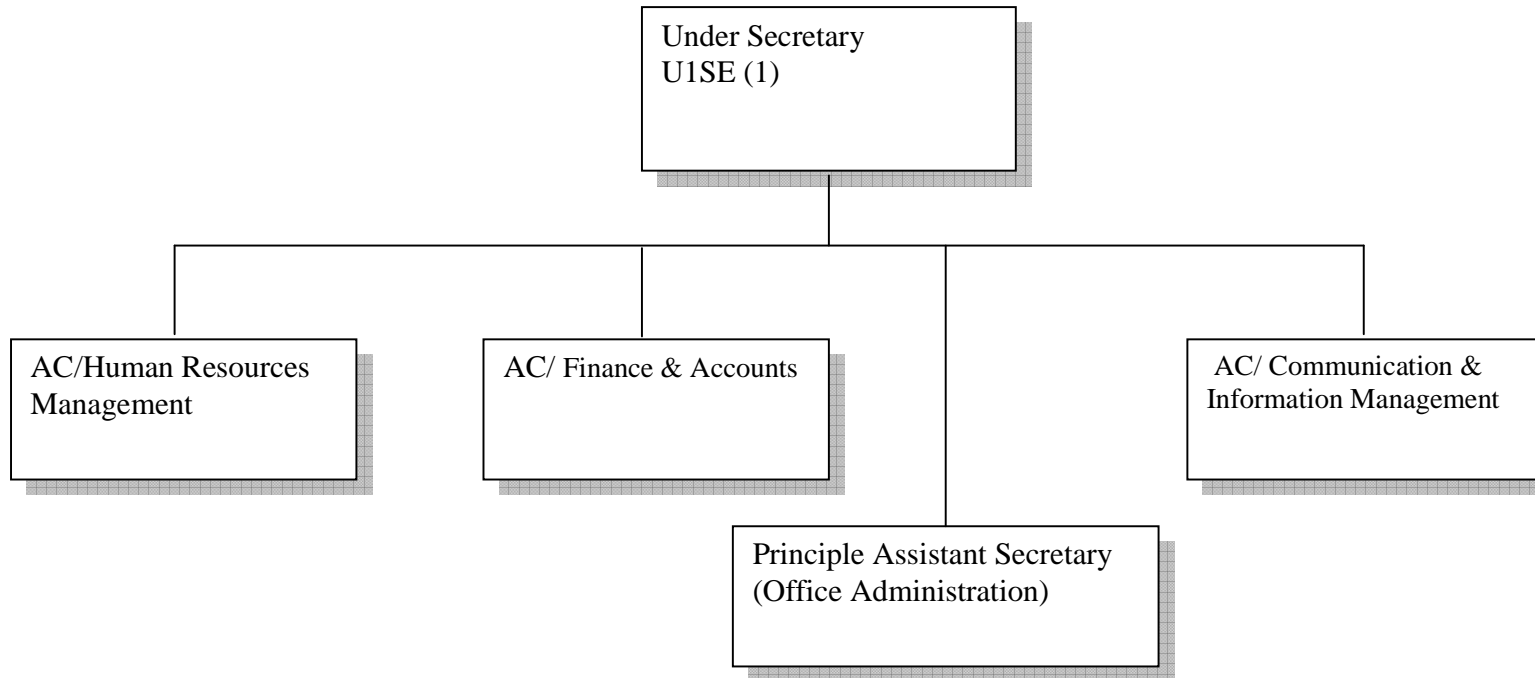


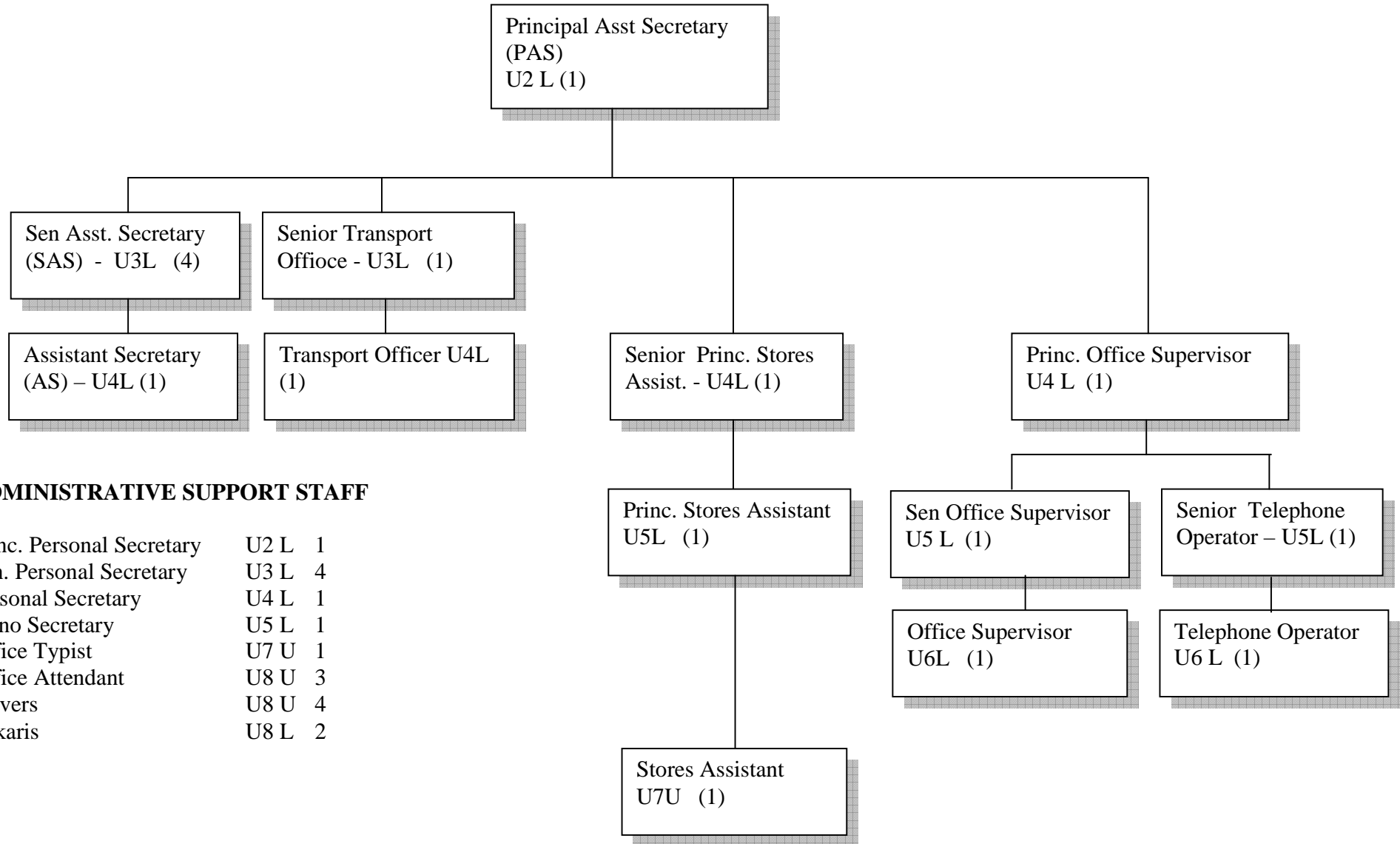
APPROVED MACRO STRUCTURE FOR THE MINISTRY OF EDUCATION AND SPORTS



APPROVED MACRO STRUCTURE FOR THE DEPARTMENT FINANCE AND ADMINISTRATION



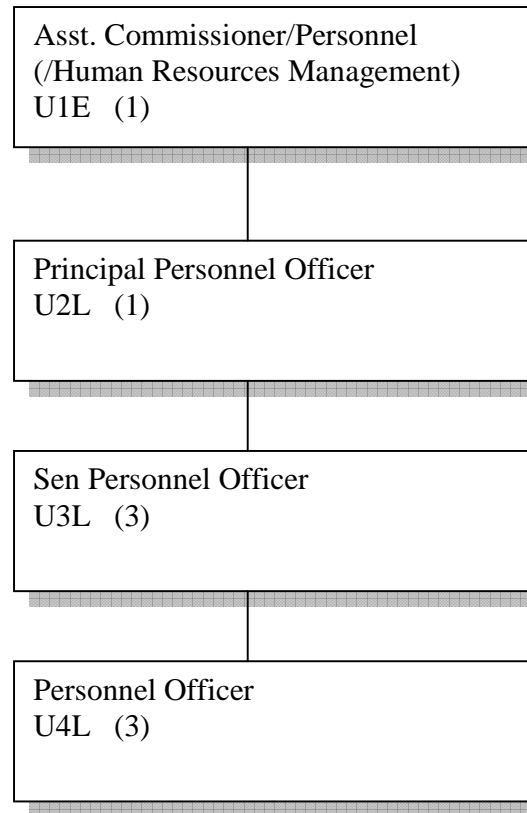
APPROVED STRUCTURE FOR OFFICE ADMINISTRATION



ADMINISTRATIVE SUPPORT STAFF

Princ. Personal Secretary	U2 L	1
Sen. Personal Secretary	U3 L	4
Personal Secretary	U4 L	1
Steno Secretary	U5 L	1
Office Typist	U7 U	1
Office Attendant	U8 U	3
Drivers	U8 U	4
Askaris	U8 L	2

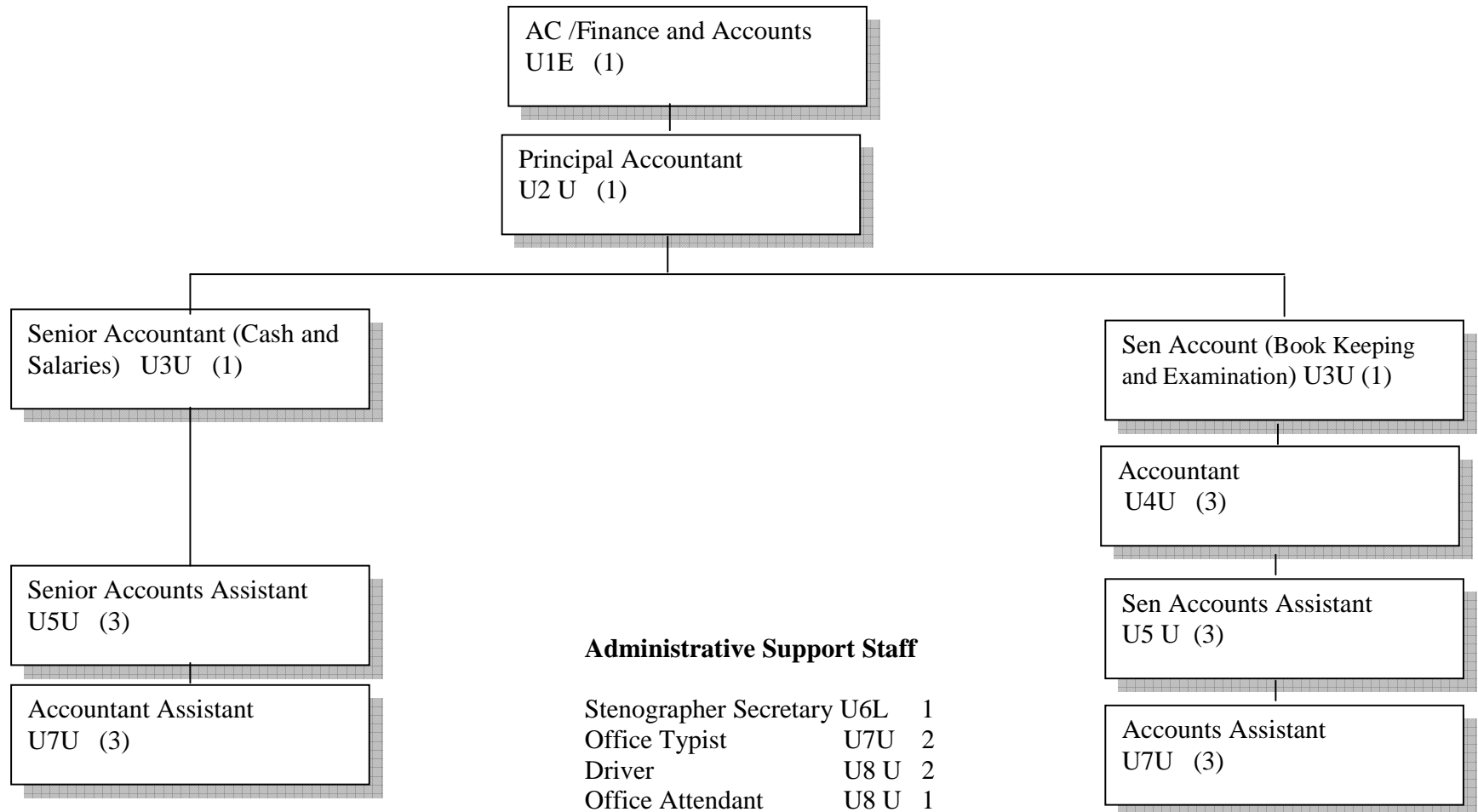
APPROVED STRUCTURE FOR HUMAN RESOURCES MANAGEMENT DIVISION



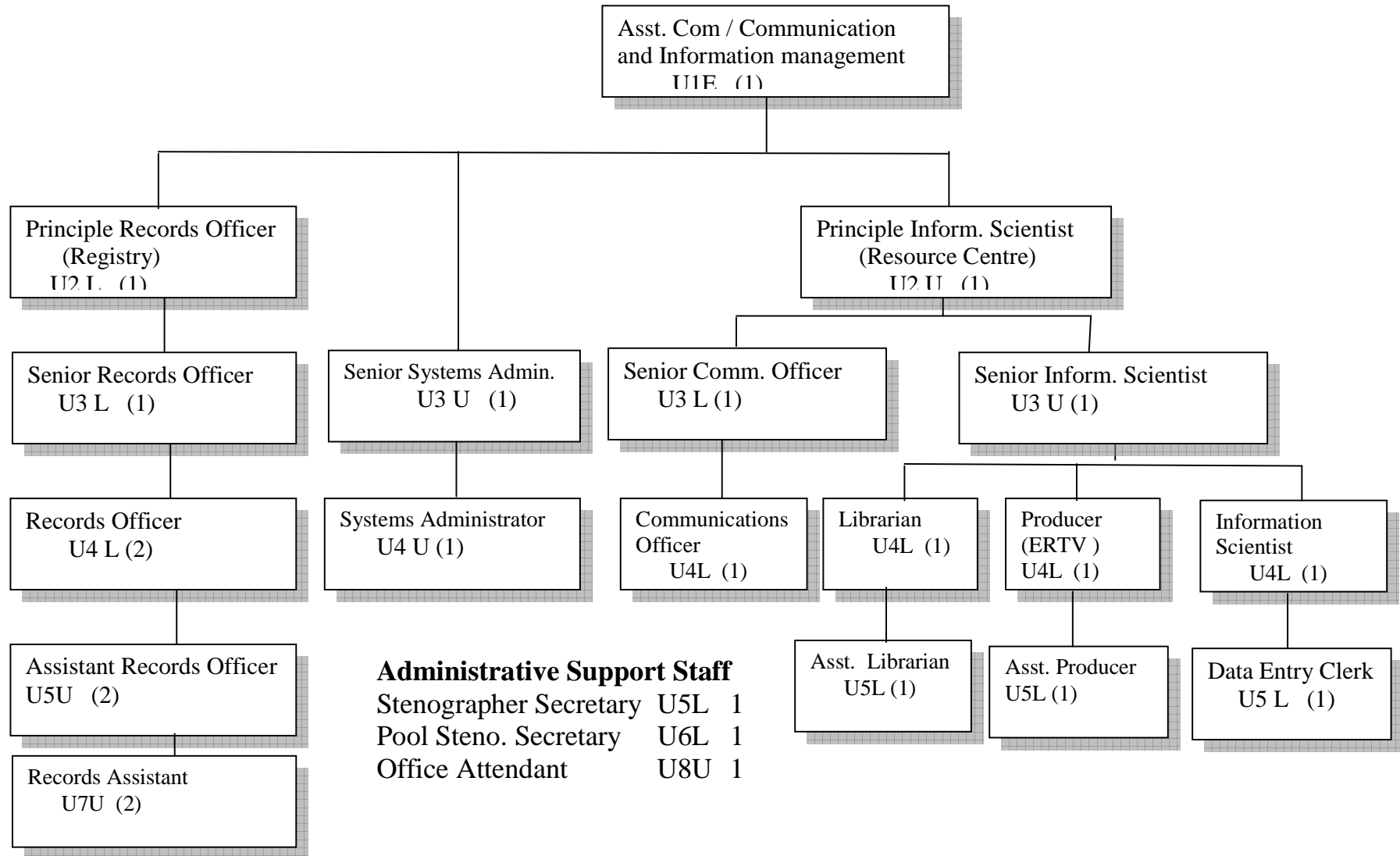
Administration Support Staff

Stenographer Secretary	U5L	1
Office Typist	U7 U	1
Driver	U8U	1
Office Attendant	U8U	1

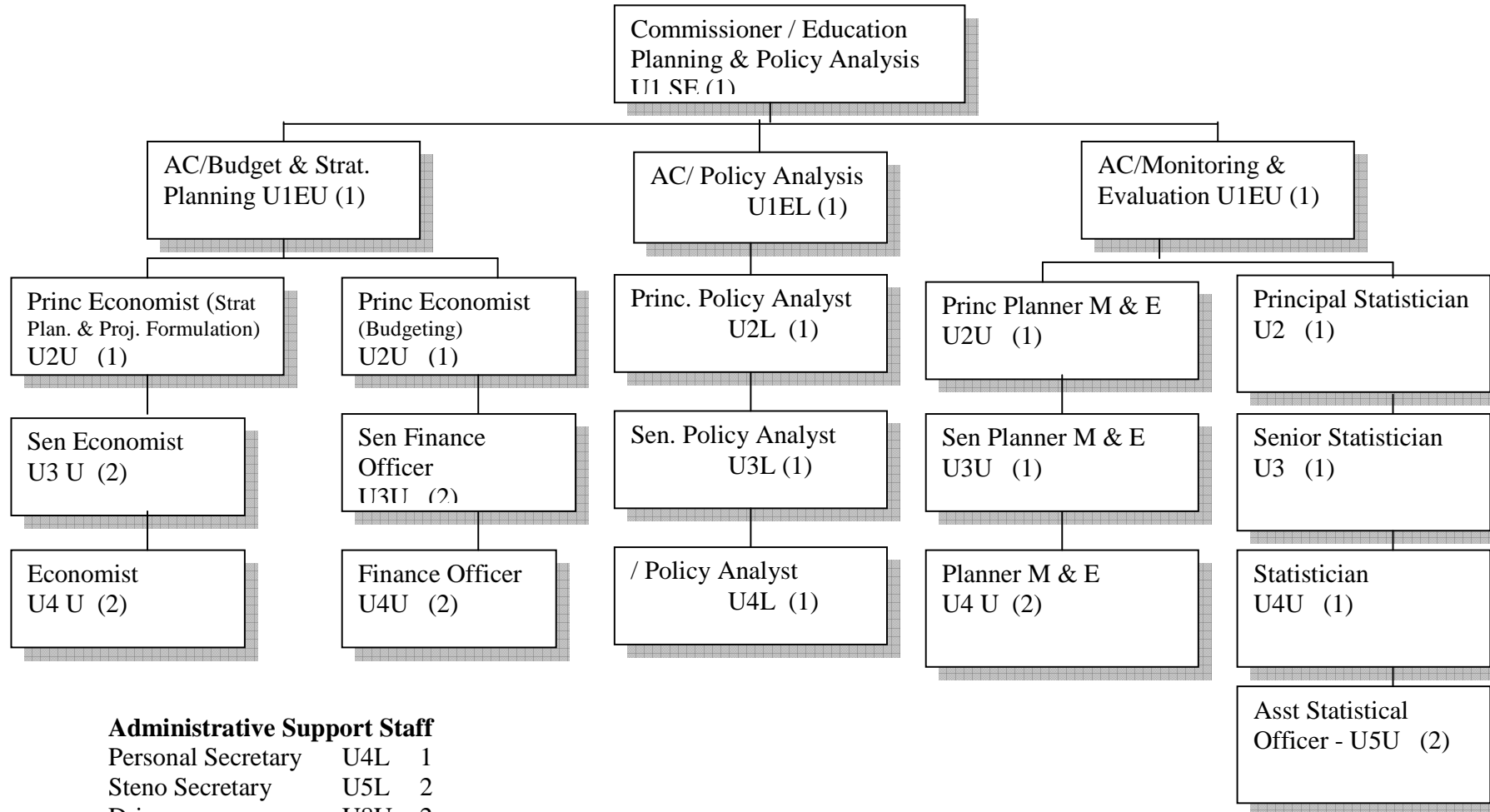
APPROVED STRUCTURE FOR FINANCE AND ACCOUNTS



**APPROVED STRUCTURE FOR COMMUNICATION AND INFORMATION MANAGEMENT
DIVISION**



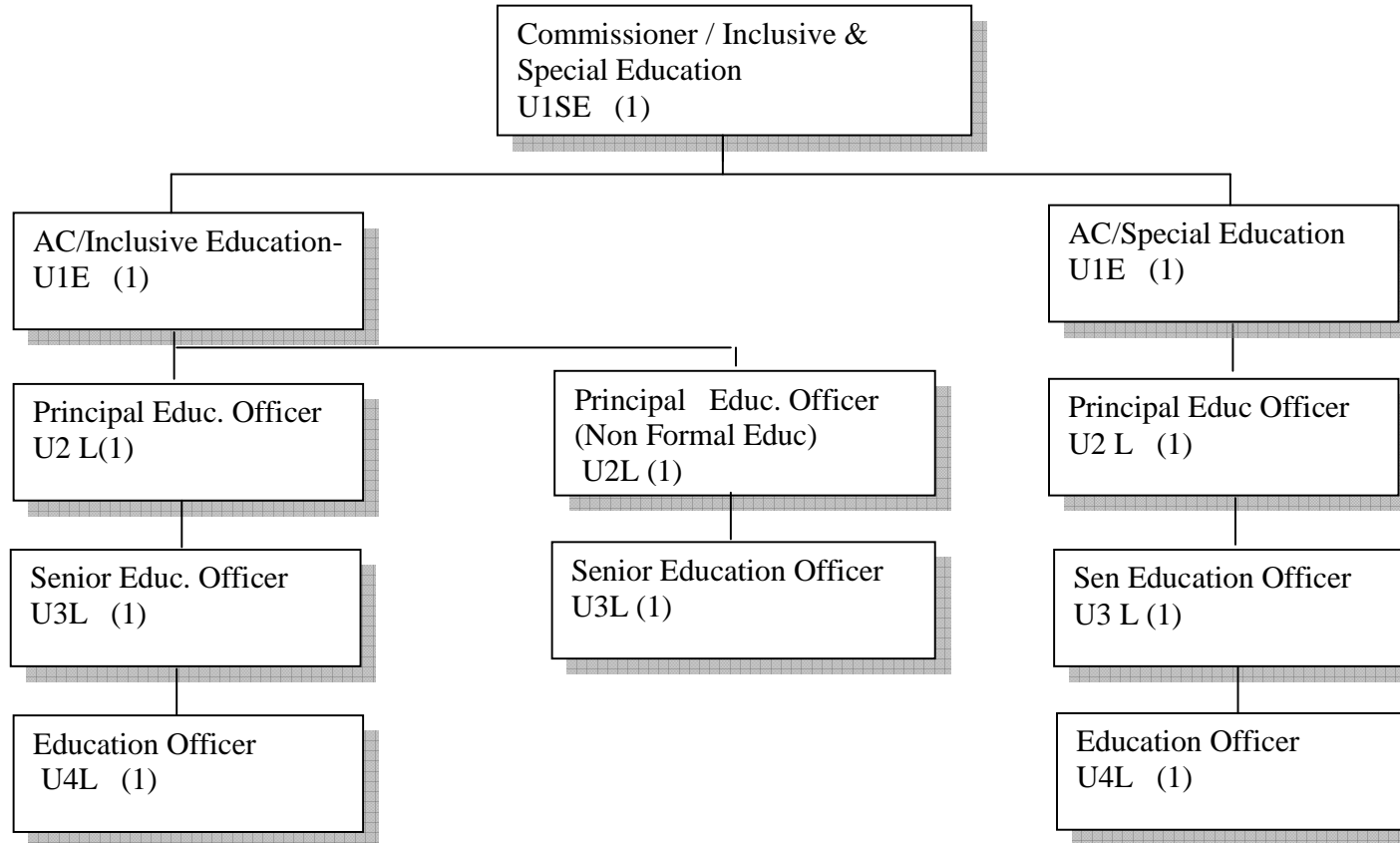
APPROVED STRUCTURE FOR EDUCATION PLANNING AND POLICY ANALYSIS DEPARTMENT



Administrative Support Staff

Personal Secretary	U4L	1
Steno Secretary	U5L	2
Driver	U8U	2
Office Attendant	U8U	1

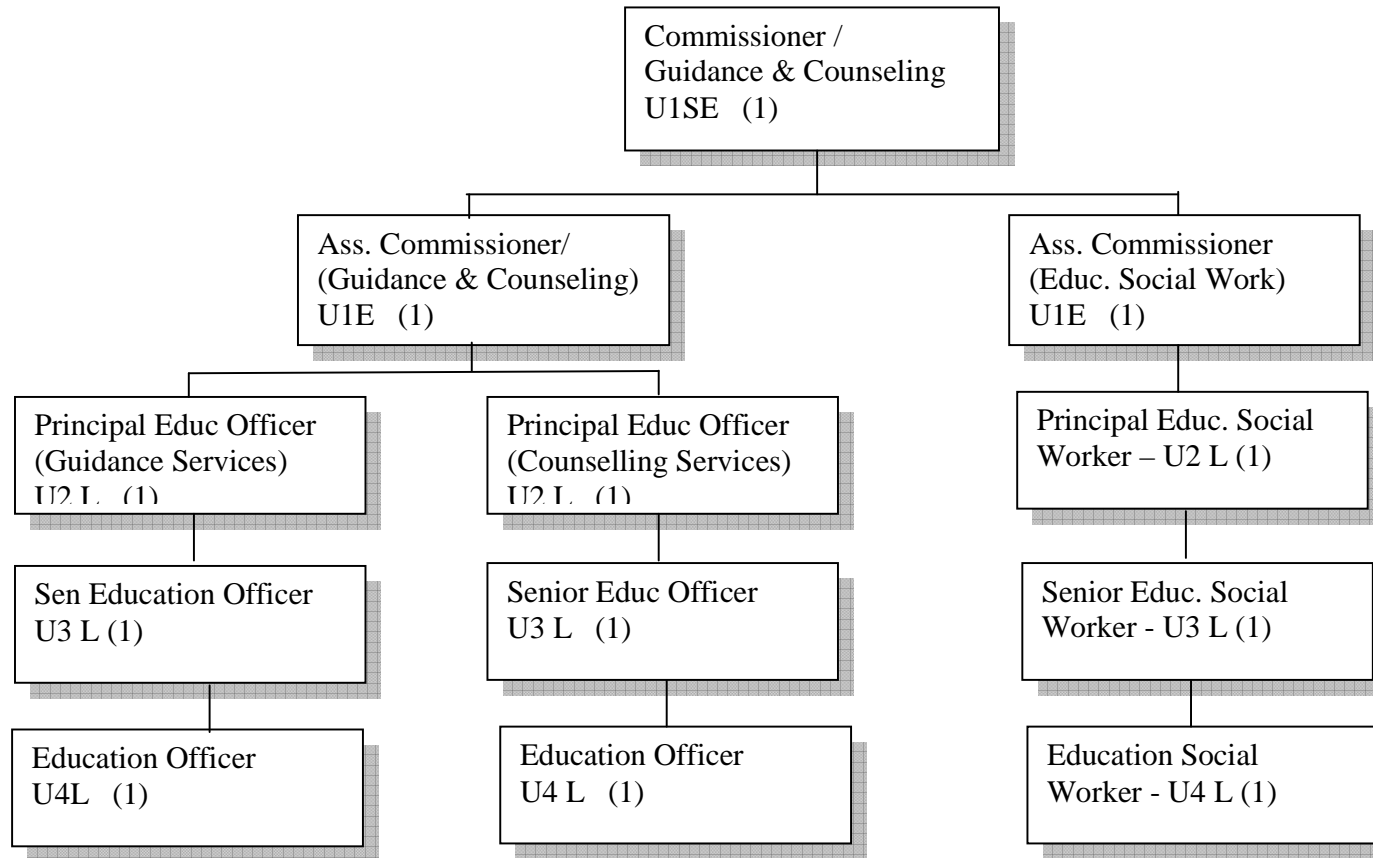
APPROVED STRUCTURE FOR SPECIAL NEEDS EDUCATION DEPARTMENT



Administrative Support Staff

Personal Secretary	U4L	1
Driver	U8U	1
Office Attendant	U8U	1

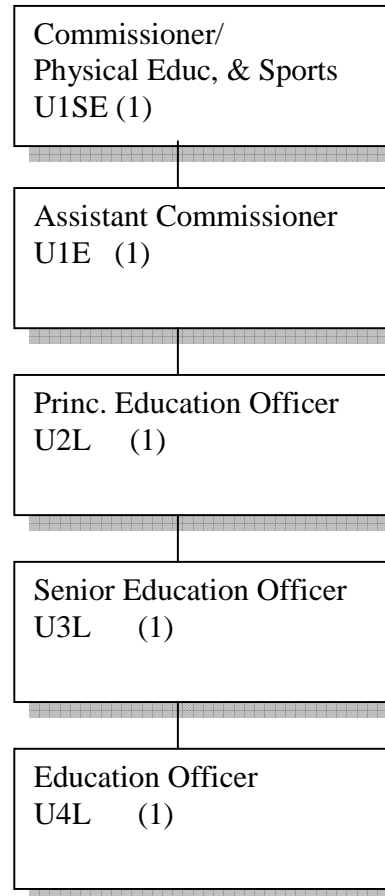
APPROVED STRUCTURE FOR GUIDANCE AND COUNSELING DEPARTMENT



Administrative Support Staff

Personal Secretary	U4L	1
Driver	U8U	1
Office Attendant	U8U	1

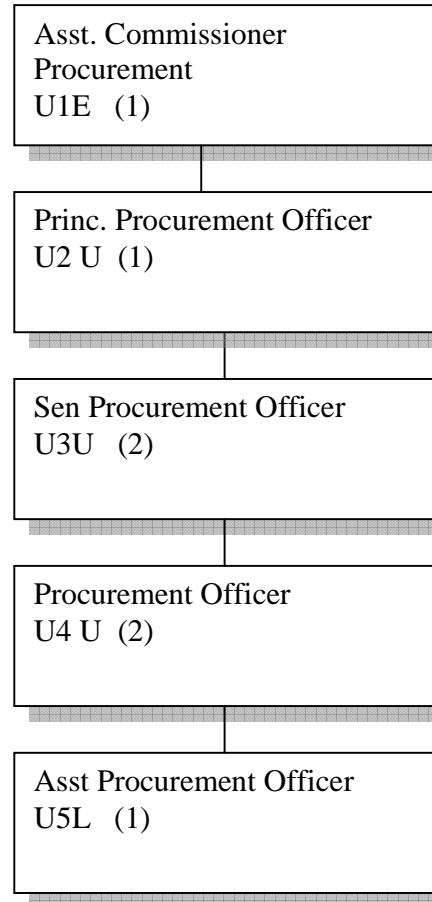
APPROVED STRUCTURE FOR PHYSICAL EDUCATION AND SPORTS DEPARTMENT



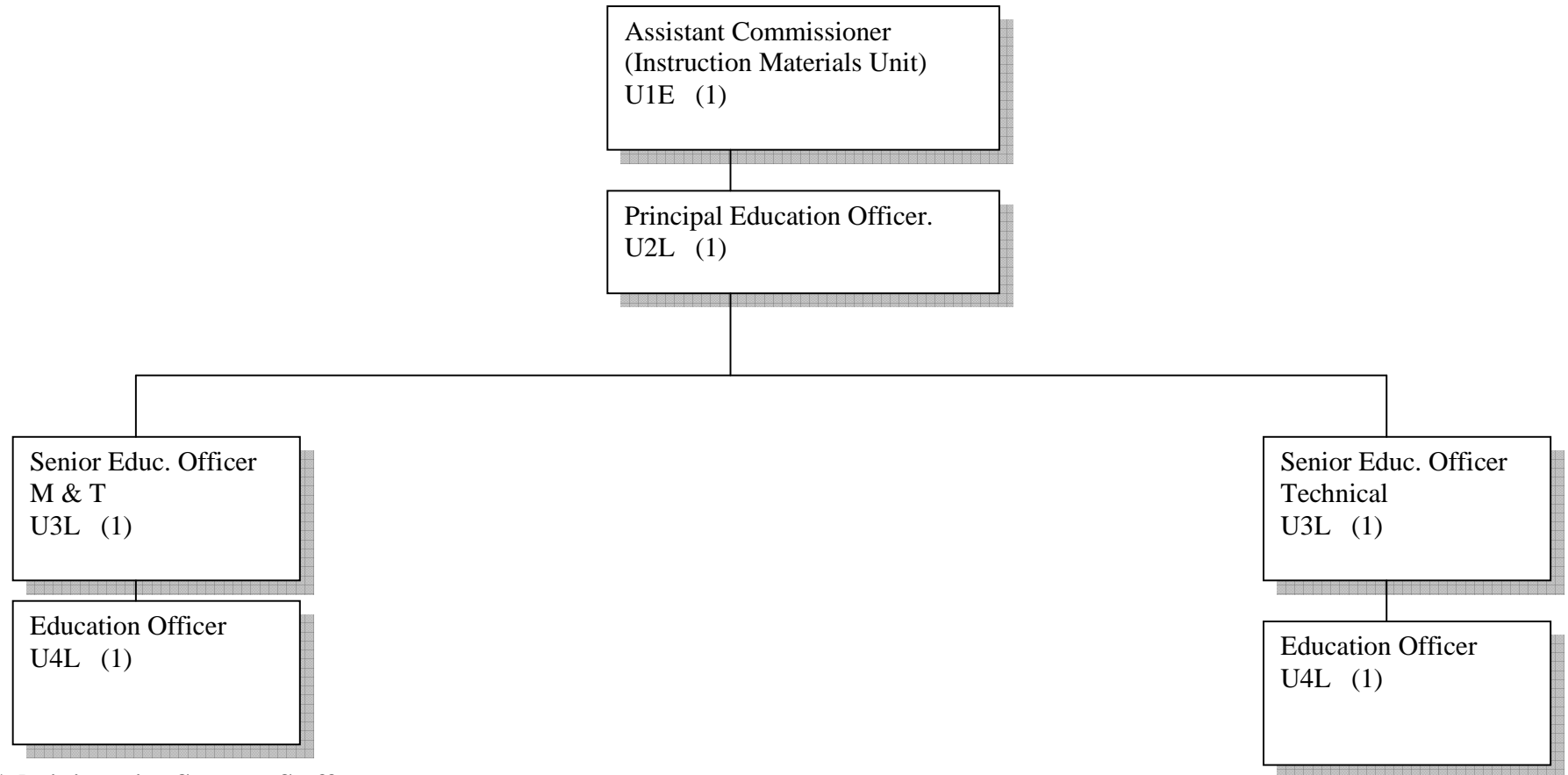
Administrative Support Staff

- Personal Secretary U4L 1
- Driver U8U 1
- Office Attendant U8U 1

APPROVED STRUCTURE FOR THE PROCUREMENT UNIT



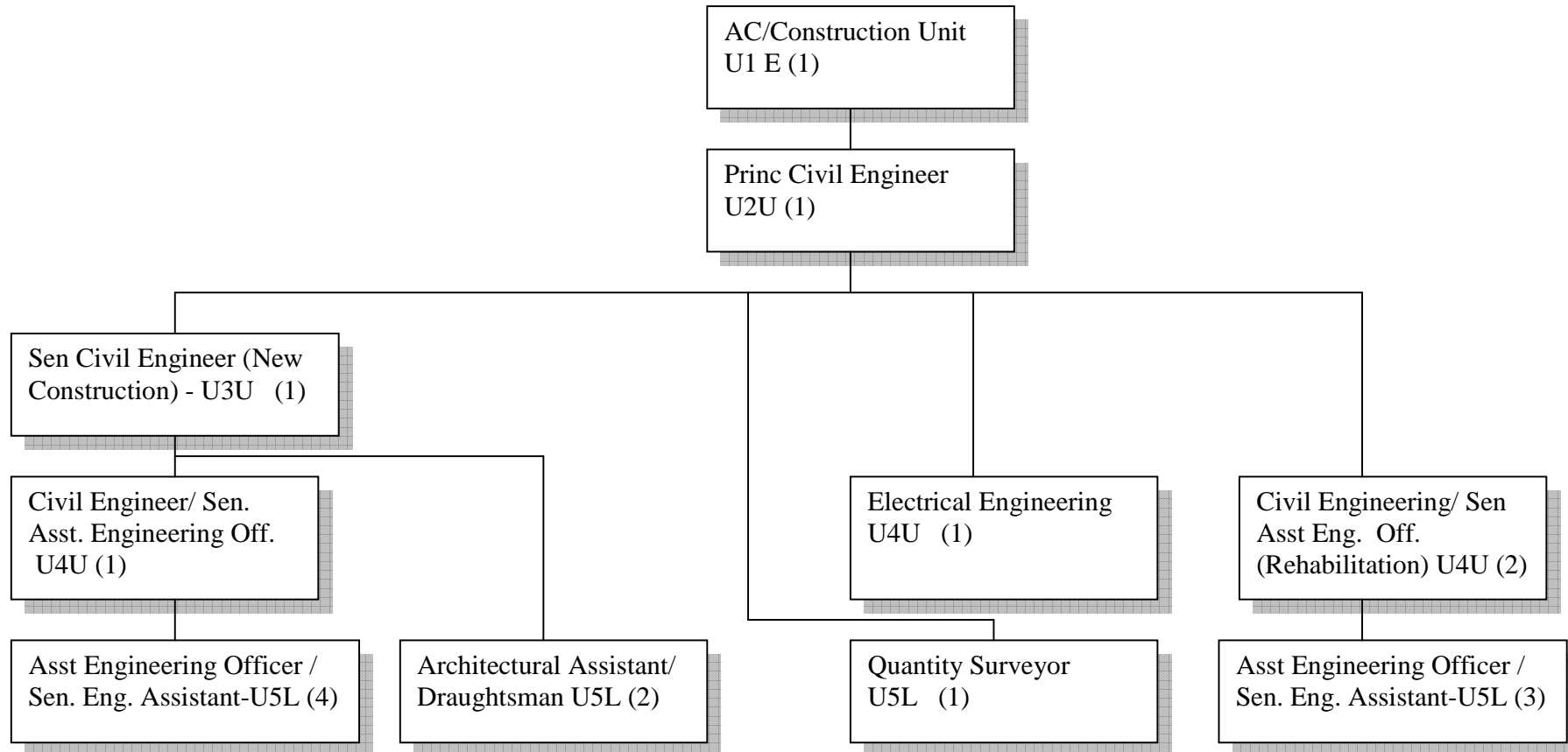
APPROVED STRUCTURE FOR THE INSTRUCTIONAL MATERIALS UNIT



Administrative Support Staff

Steno Secretary	U5L	1
Office Attendant	U8 U	1
Driver	U8U	1

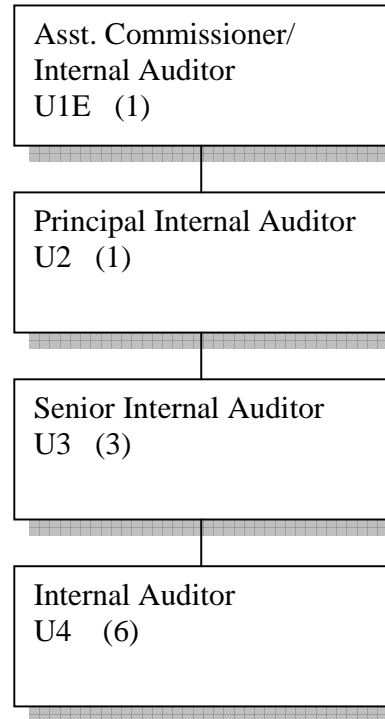
APPROVED STRUCTURE FOR THE CONSTRUCTION UNIT



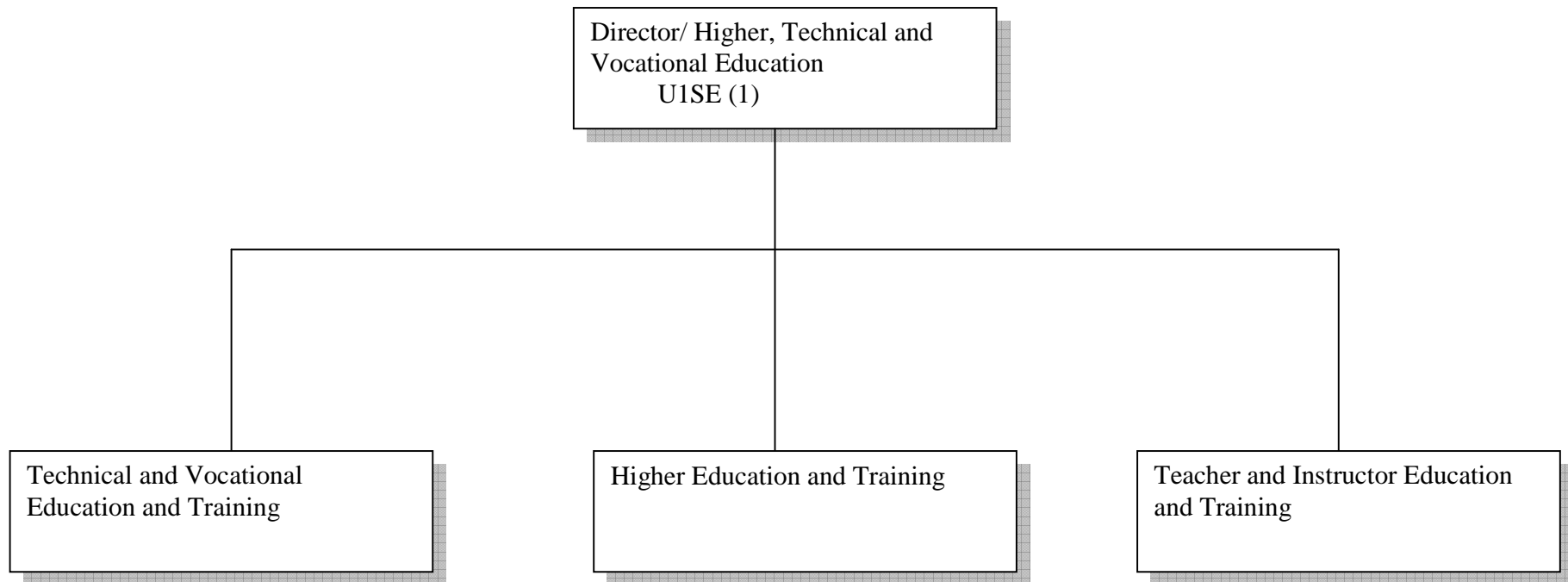
Administrative Support Staff

Stenographer Secretary	U5L	1	Driver	U8U	1
Office Attendant	U8U	1			

APPROVED STRUCTURE FOR INTERNAL AUDIT UNIT



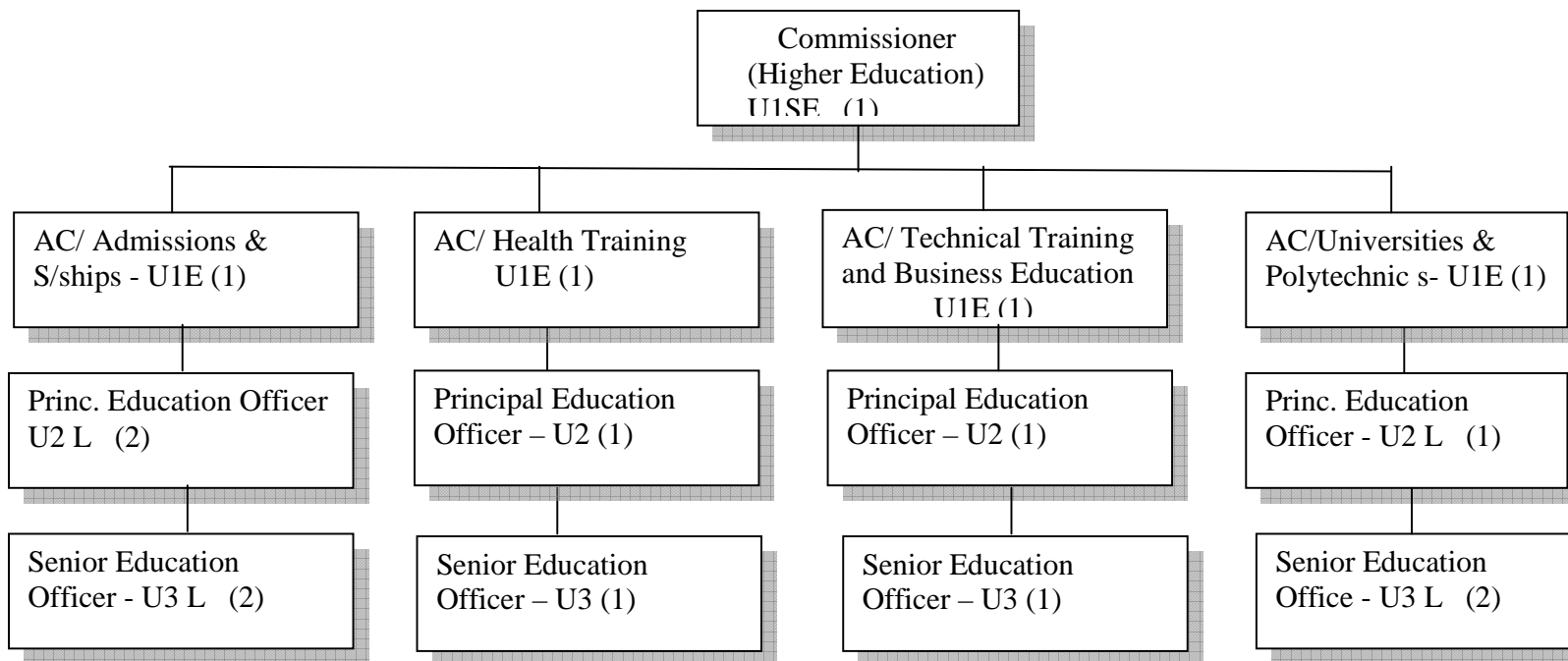
APPROVED STRUCTURE FOR THE OFFICE OF THE DIRECTOR OF HIGHER, TECHNICAL AND VOCATIONAL EDUCATION AND TRAINING



Support Staff

Personal Secretary	U4L	1
Office Attendant	U8U	1
Driver	U8U	1

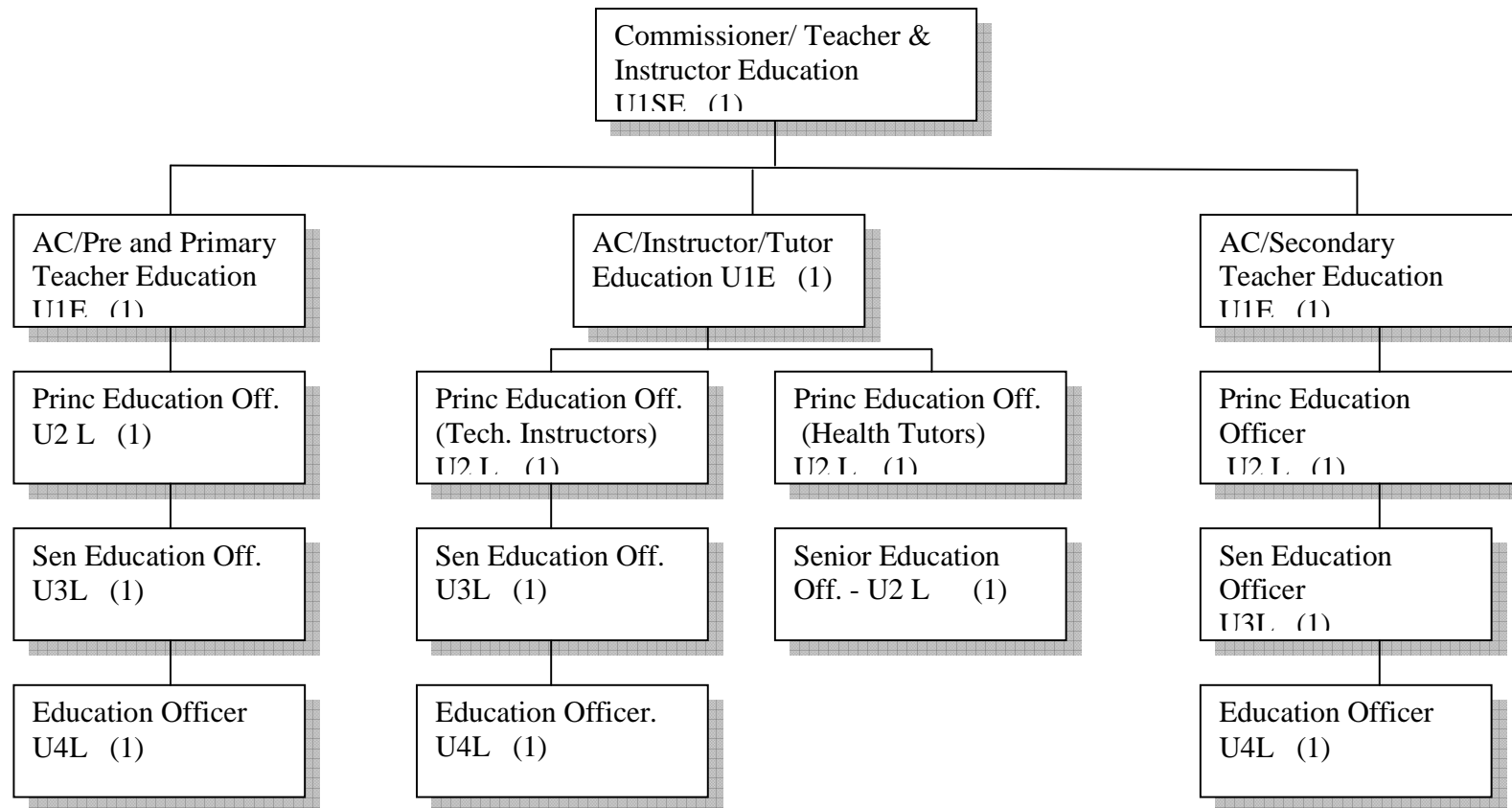
APPROVED STRUCTURE FOR HIGHER EDUCATION AND TRAINING DEPARTMENT



Administrative Support Staff

Personal Secretary	U4L	1
Steno Secretary	U5L	1
Office Typist	U7U	1
Office Attendant	U8U	1
Driver	U8U	1

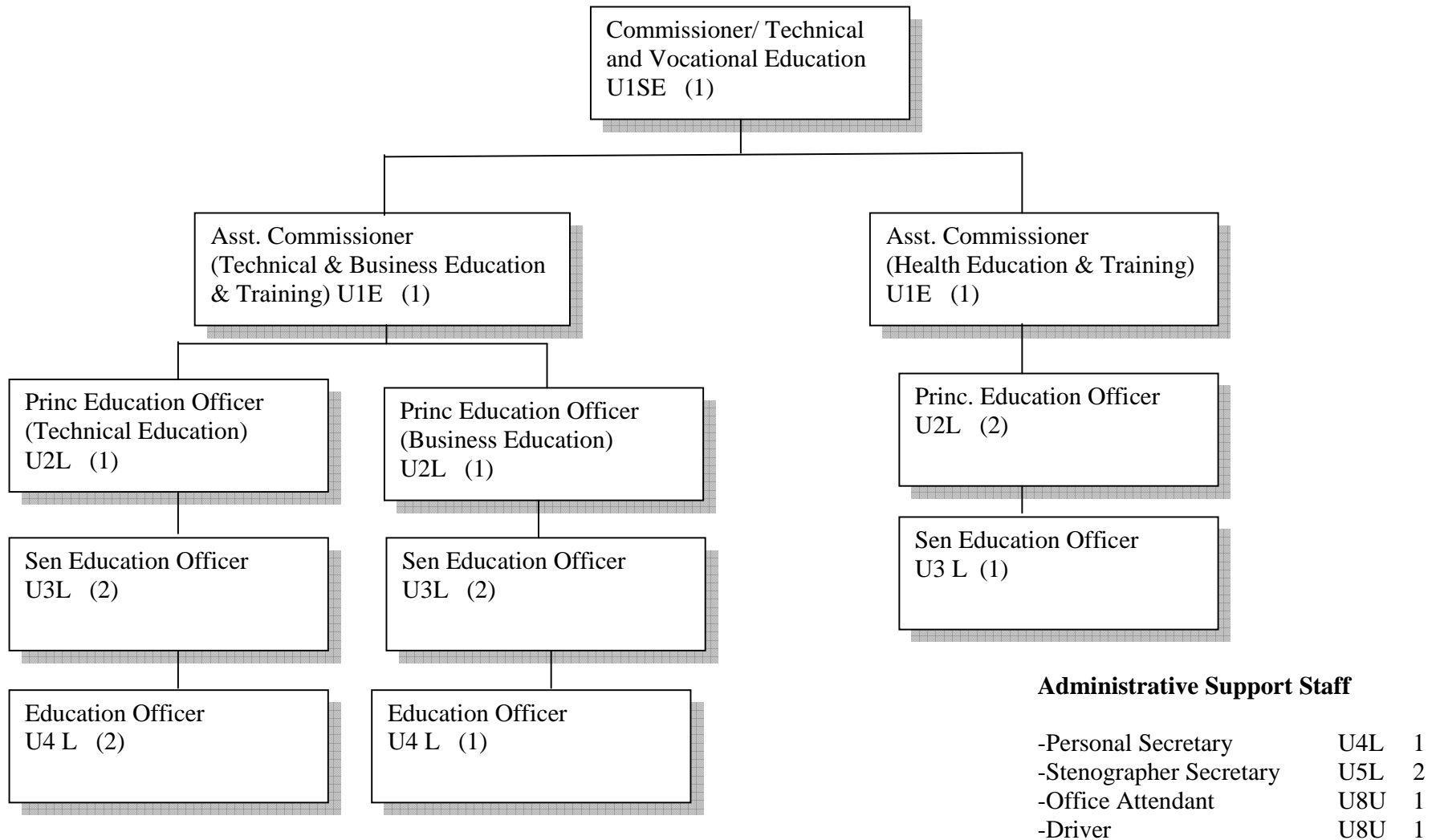
APPROVED STRUCTURE FOR TEACHER AND TUTOR/ INSTRUCTOR EDUCATION AND TRAINING DEPARTMENT



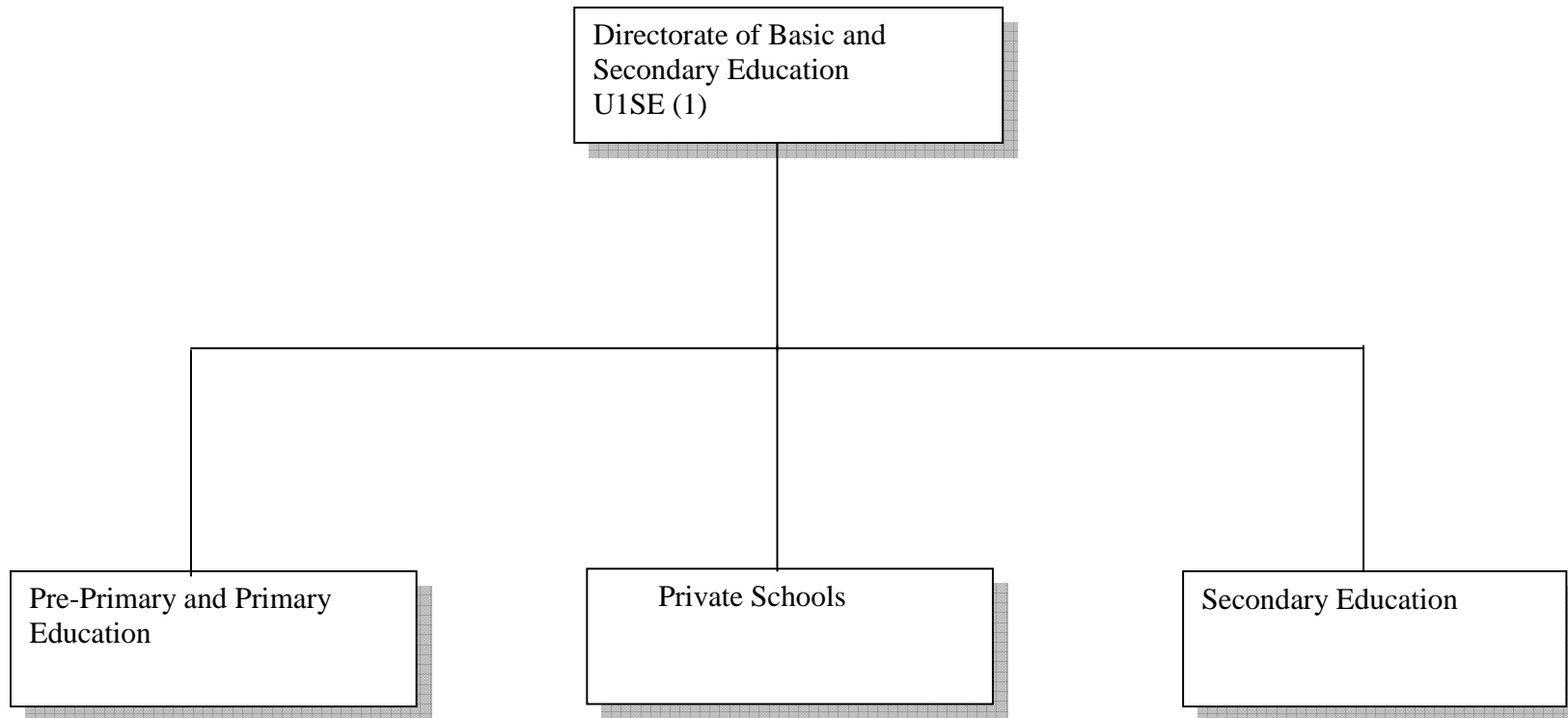
Administrative Support Staff

- Personal Secretary U4L 1
- Stenographer Secretary U5L 1
- Office Typist U7U 1
- Office Attendant U8U 1
- Driver U8U 2

APPROVED STRUCTURE FOR TECHNICAL AND VOCATIONAL EDUCATION AND TRAINING DEPARTMENT



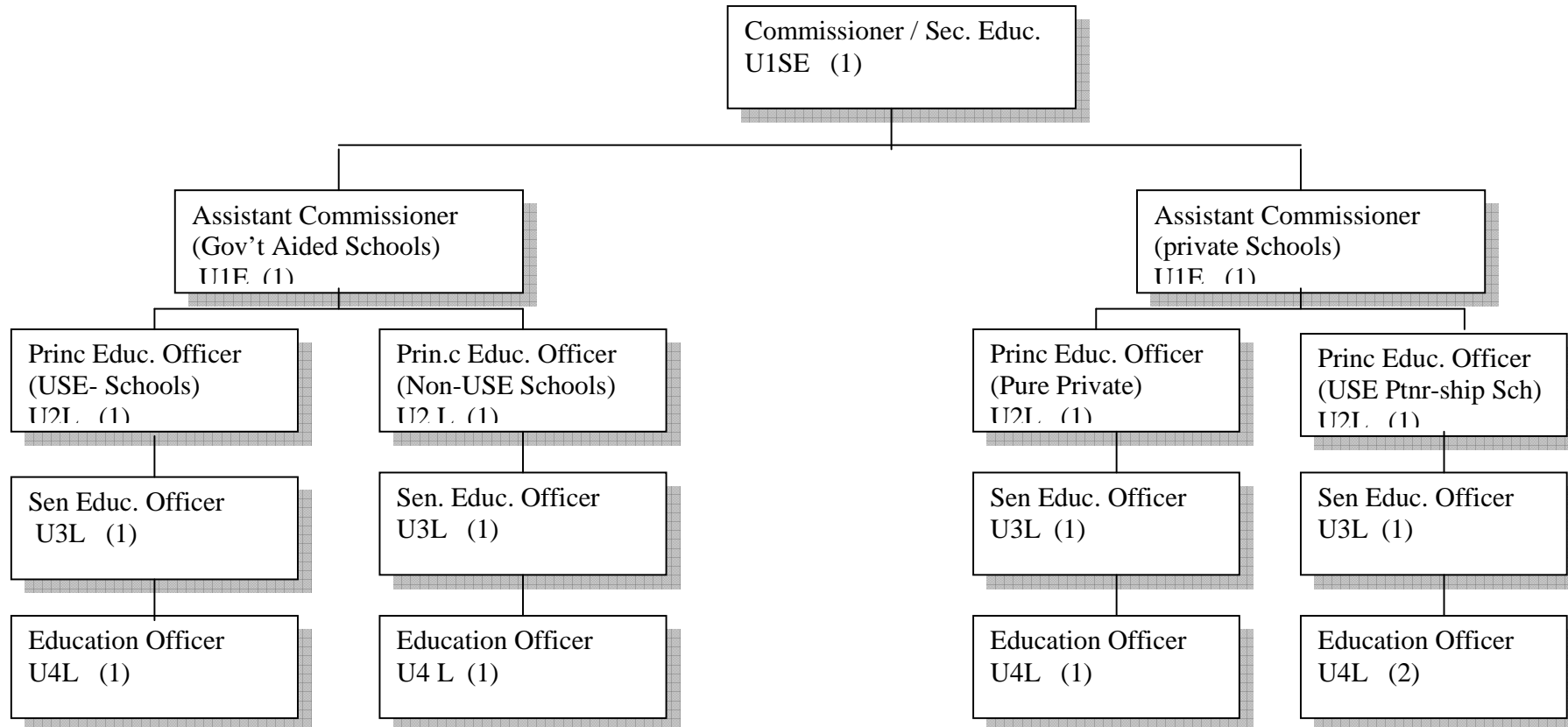
APPROVED STRUCTURE FOR THE OFFICE OF THE DIRECTOR OF BASIC AND SECONDARY EDUCATION



Support Staff

Personal Secretary	U4L	1
Office Attendant	U8U	1
Driver	U8U	1

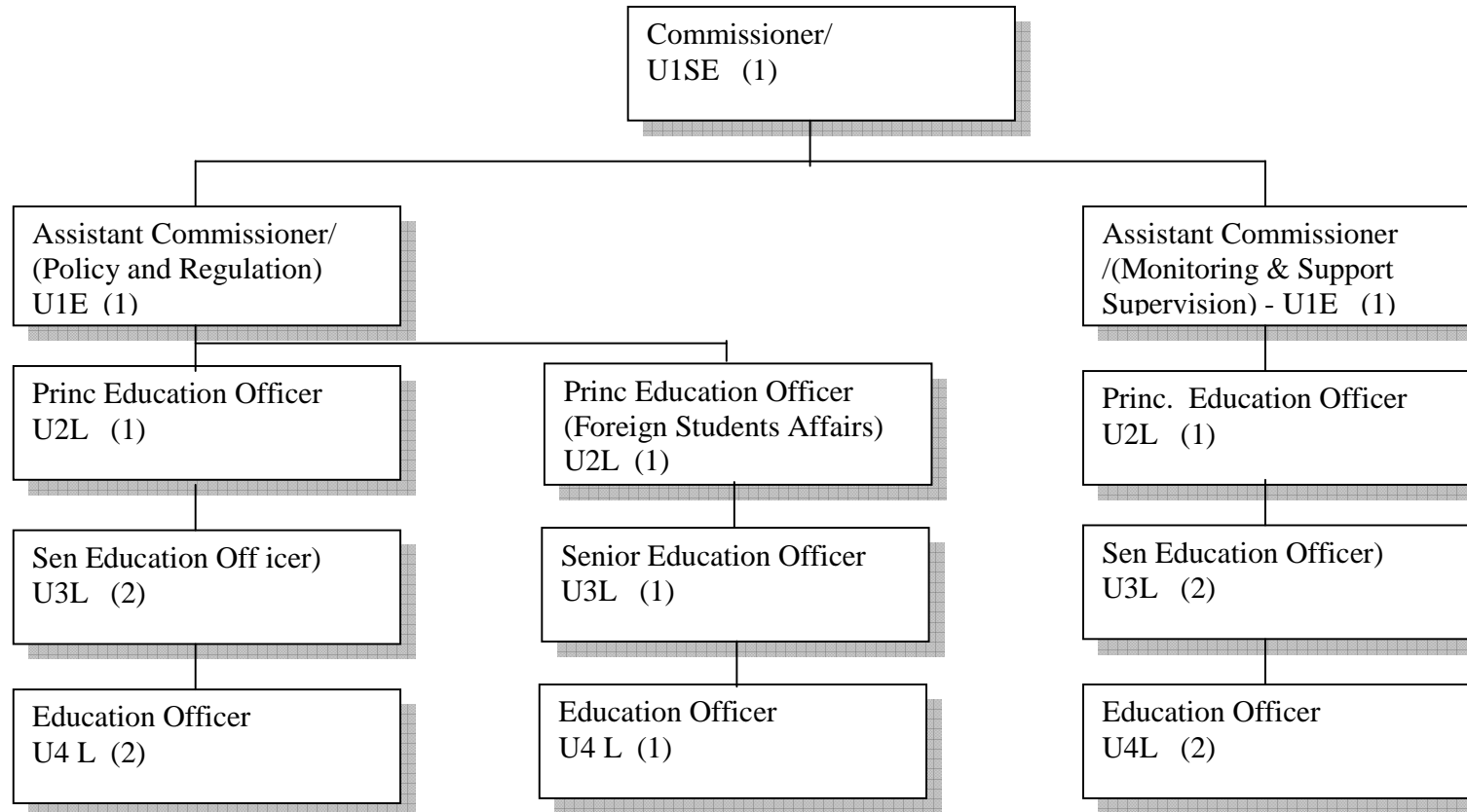
APPROVED STRUCTURE FOR SECONDARY EDUCATION DEPARTMENT



Administrative Support Staff

- Personal Secretary U4L 1
- Office Typist U7U 1
- Driver U8U 1
- Office Attendant U8U 1

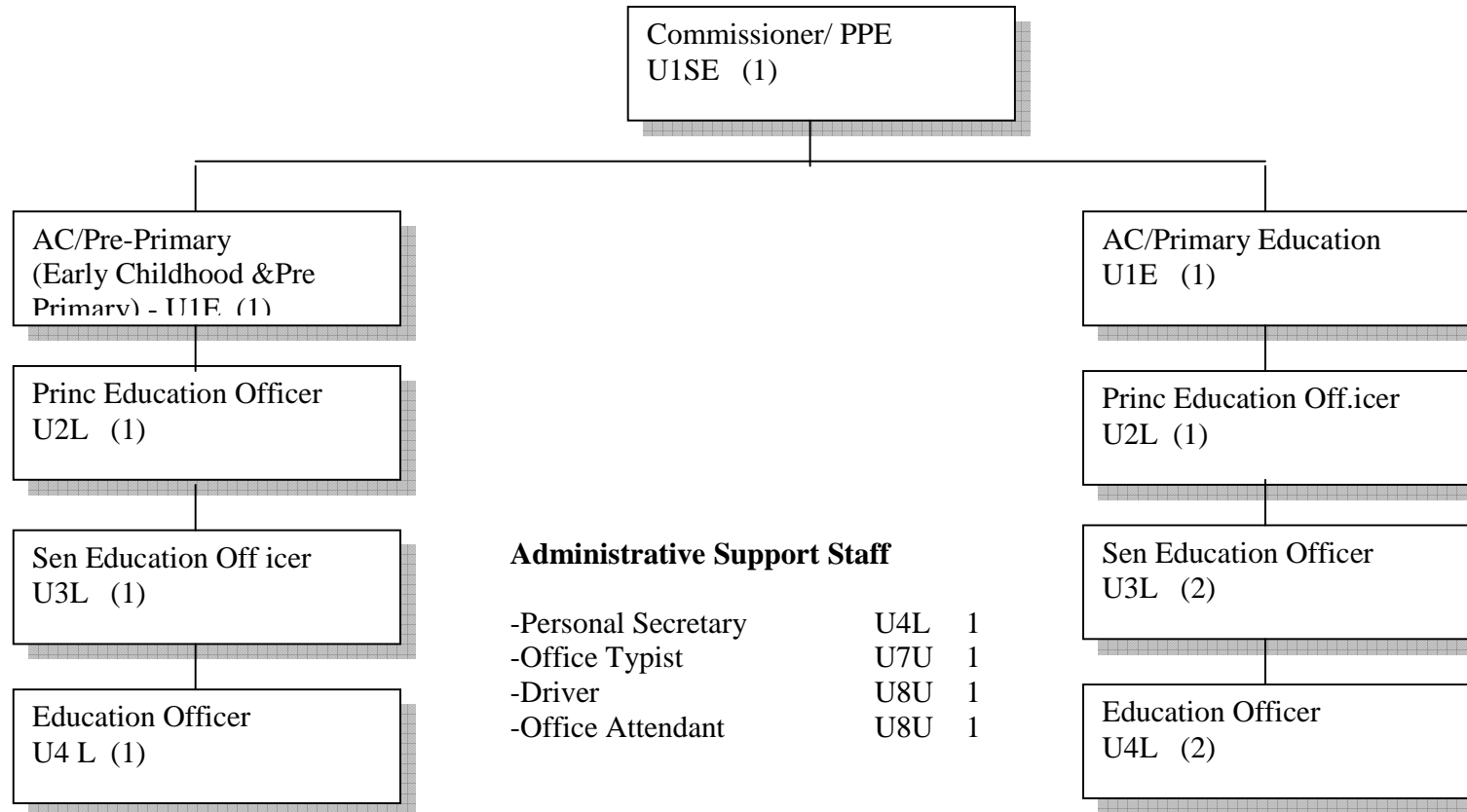
APPROVED STRUCTURE FOR PRIVATE SCHOOLS DEPARTMENT



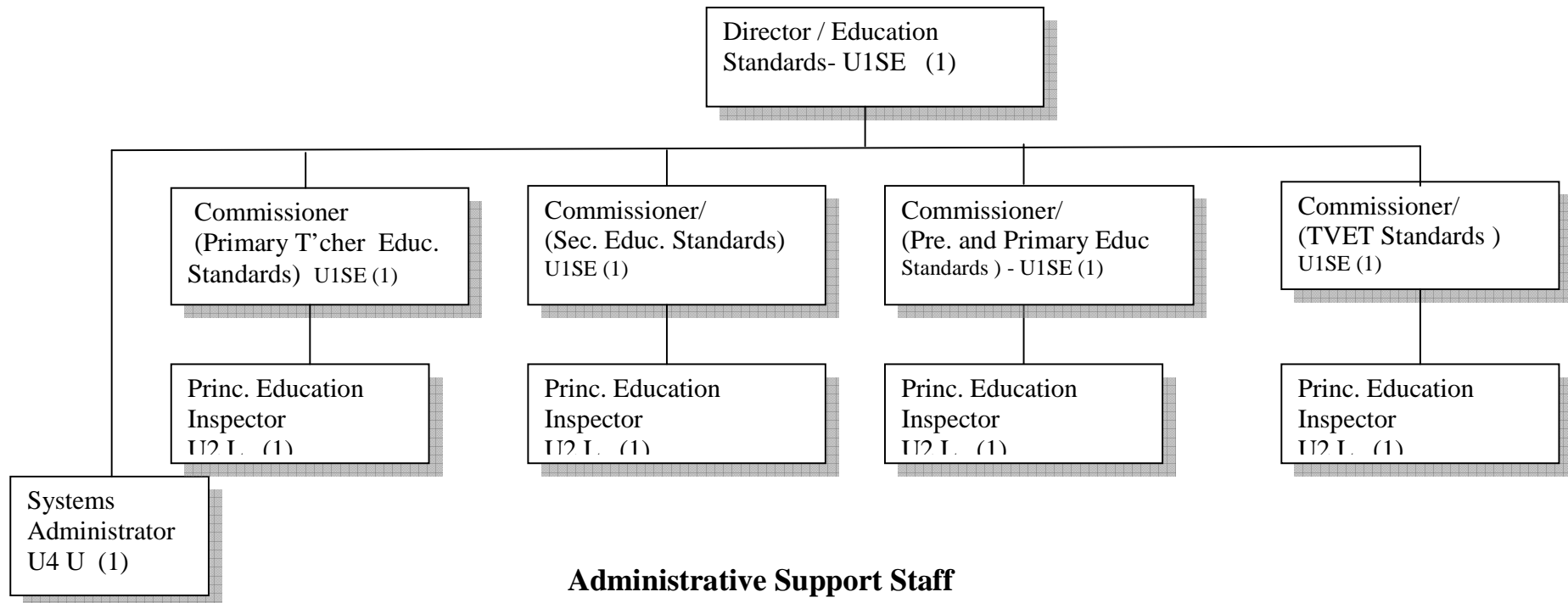
Administrative Support Staff

- Personal Secretary U4L 1
- Steno Secretary U5U 1
- Driver U8U 1
- Office Attendant U8U 1

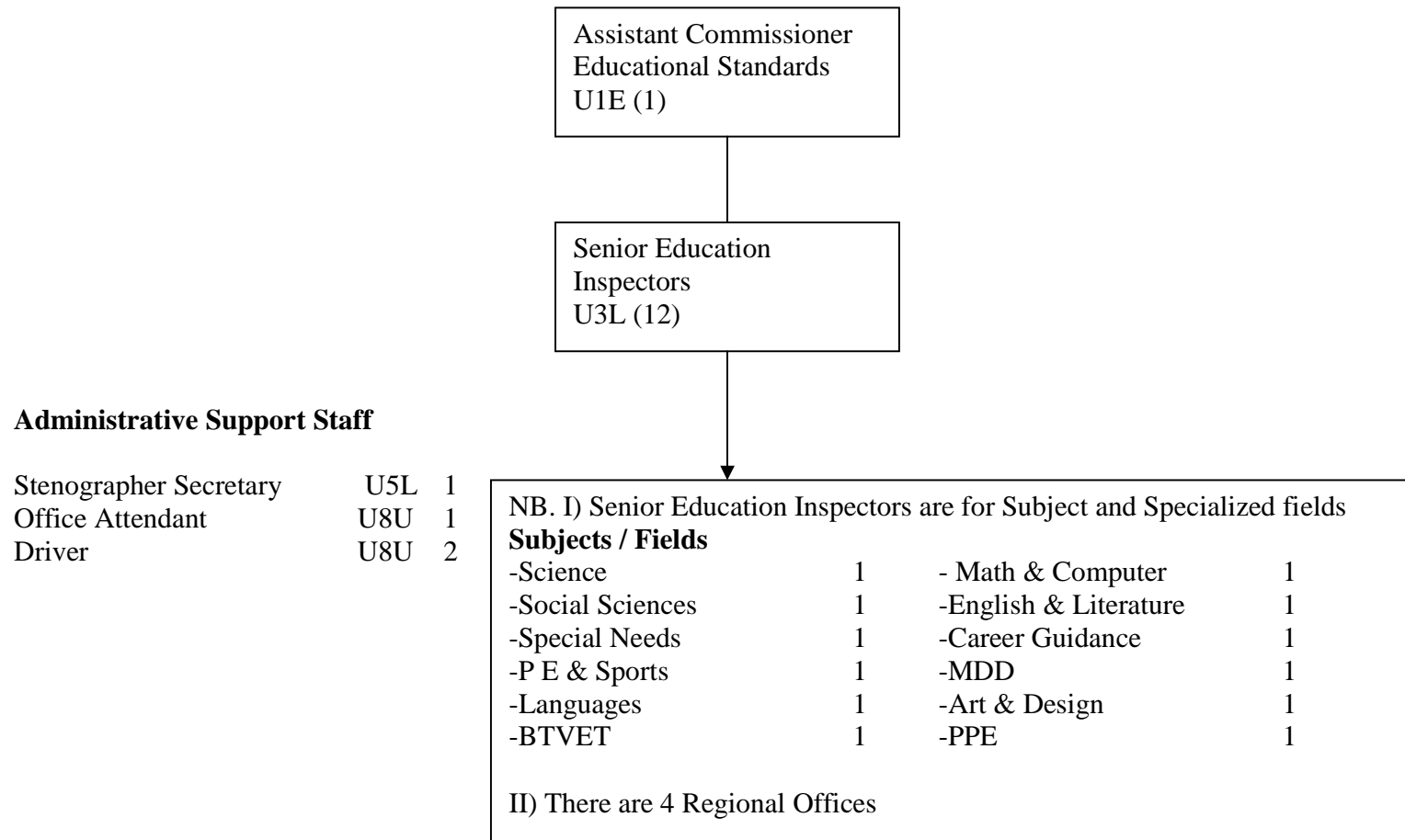
APPROVED STRUCTURE FOR BASIC EDUCATION DEPARTMENT



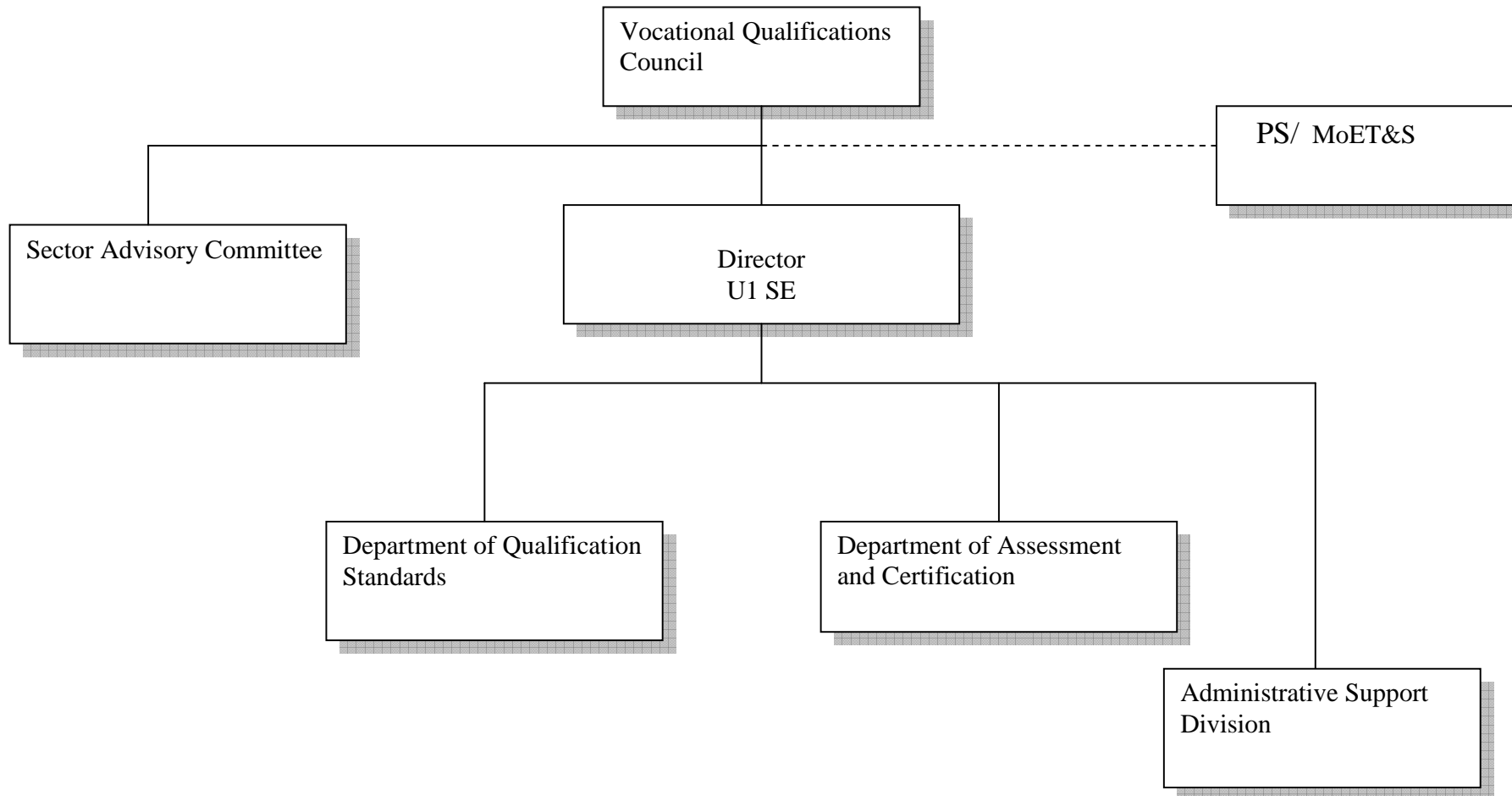
**APPROVED STRUCTURE FOR THE DIRECTORATE OF EDUCATION STANDARDS
(HEAD OFFICE)**



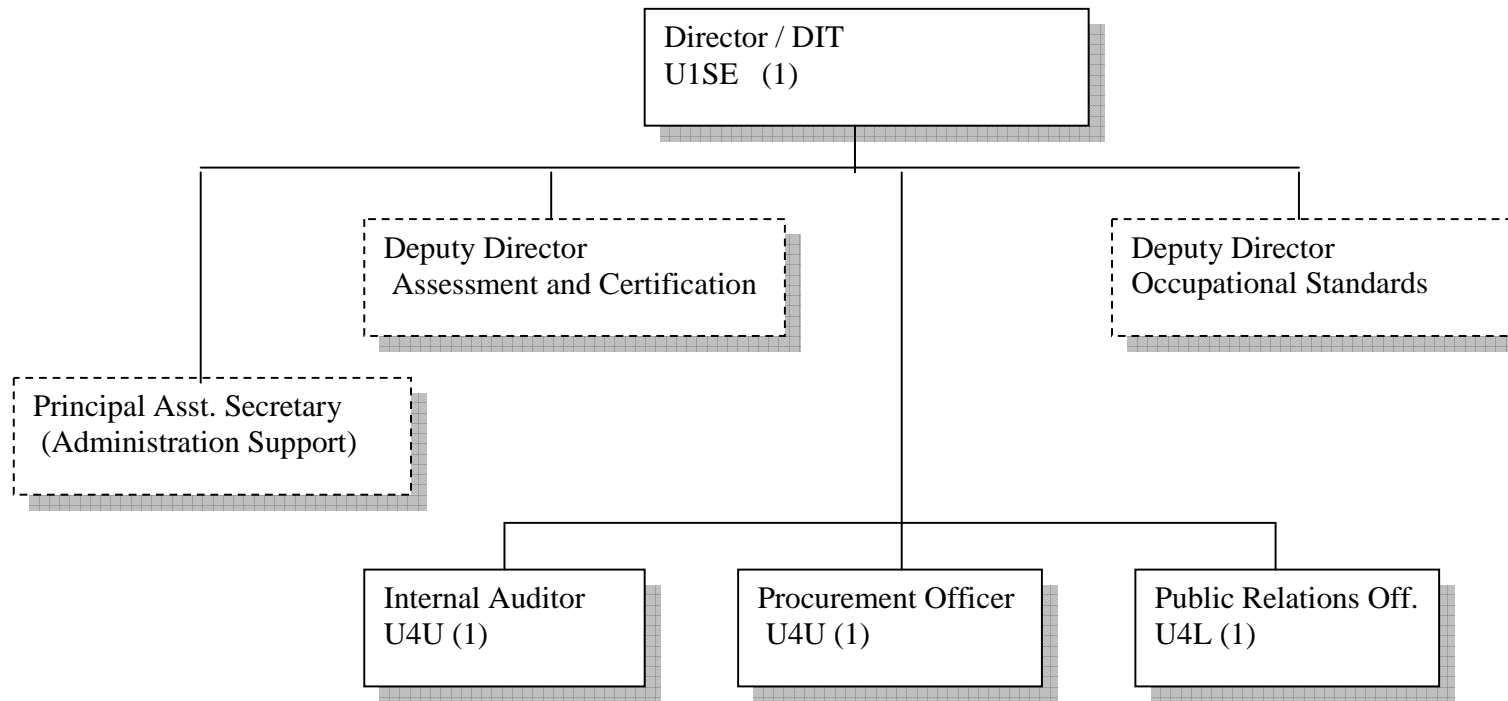
**APPROVED STRUCTURE FOR THE REGIONAL OFFICE OF THE EDUCATION STANDARDS
DIRECTORATE**



APPROVED MACRO STRUCTURE FOR THE DIRECTORATE OF INDUSTRIAL TRAINING



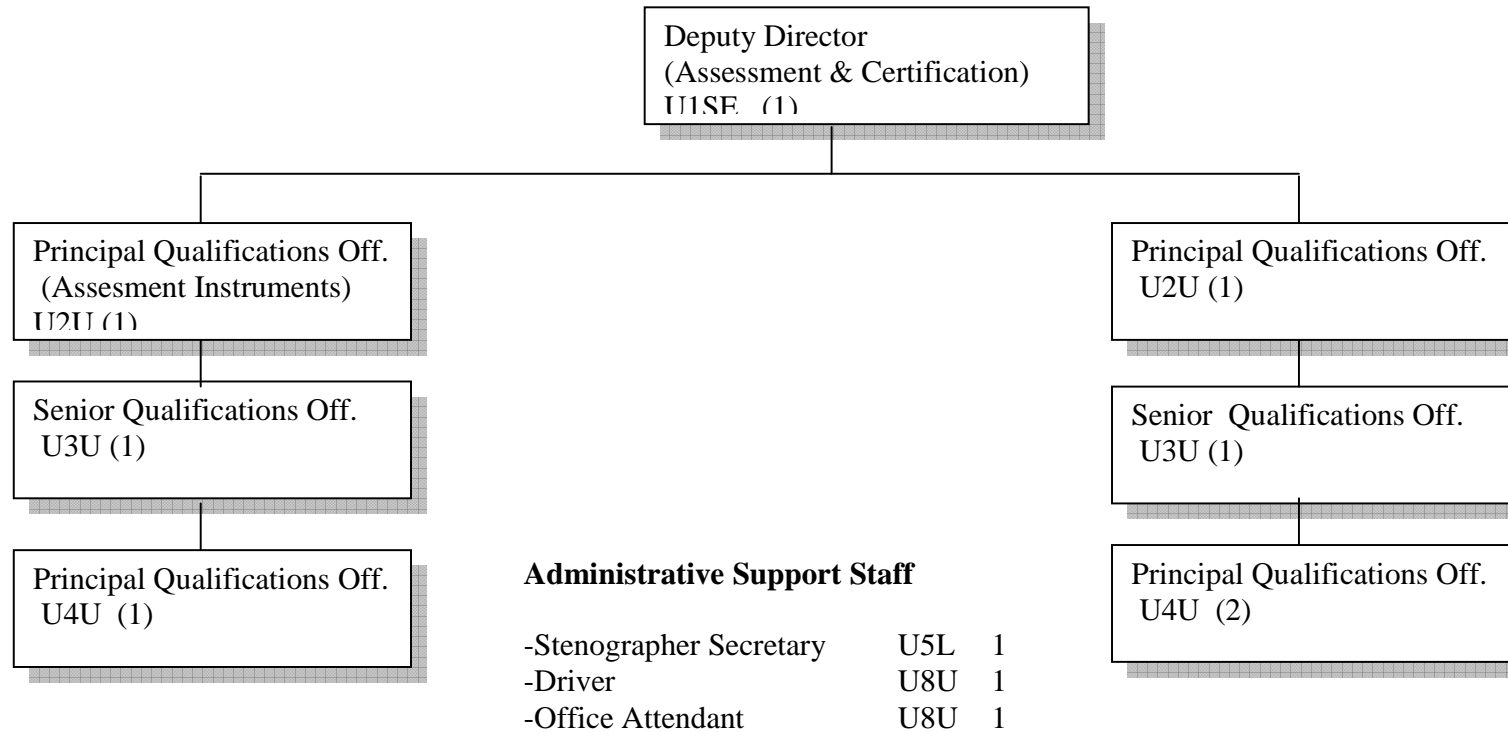
RECOMMENDED STRUCTURE FOR THE OFFICE OF THE DIRECTOR



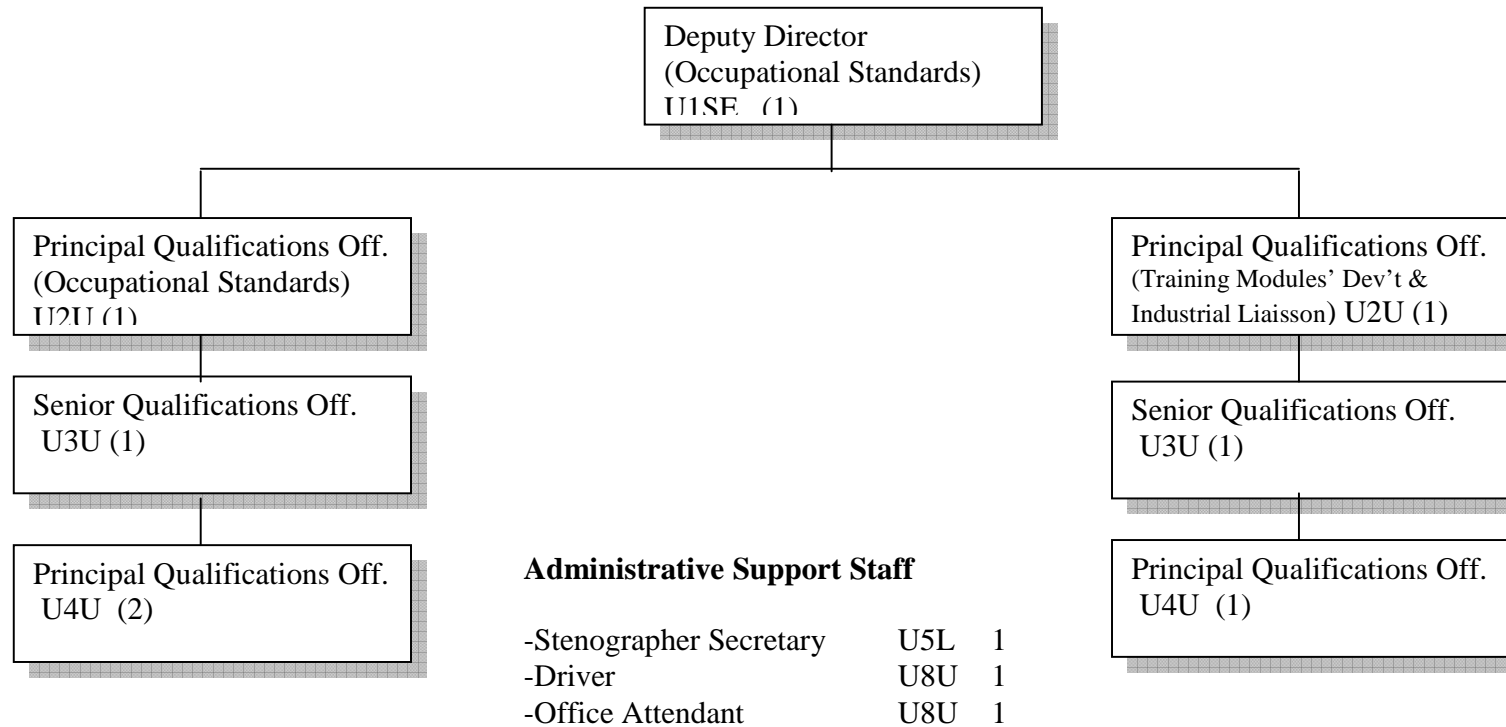
Support Staff

Personal Secretary	U4L	1
Driver	U8U	1
Office Attendant	U8U	1

RECOMMENDED STRUCTURE FOR ASSESSMENT AND CERTIFICATION DEPARTMENT



RECOMMENDED STRUCTURE FOR OCCUPATIONAL STANDARDS DEPARTMENT



RECOMMENDED STRUCTURE FOR THE ADMINISTRATIVE SUPPORT DIVISION

